



MICHAEL TUCK
ESTATE & LETTING AGENTS



123 Greenways, Gloucester – GL4 3SA

Gloucester

Guide Price **£495,000**

123 Greenways

Gloucester, Gloucester

STUNNING FIVE-Bedroom DETACHED Family Home in a Quiet Barnwood Location
Situated in a QUIET and HIGHLY SOUGHT-AFTER area of Barnwood, this impressive three-storey, FIVE-bedroom DETACHED home offers spacious and versatile living, ideal for modern family life.

The property boasts FIVE GENEROUSLY SIZED DOUBLE BEDROOMS, providing ample accommodation for growing families or those needing flexible home office space. Two of the bedrooms benefit from stylish EN-SUITE BATHROOMS, with En-Suite one having a BATH AND SEPERATE DOUBLE SHOWER while En-Suite two enjoys a GENEROUS DOUBLE SHOWER. The top floor also features a well-appointed family BATHROOM with FITTED SHOWER. A convenient CLOAKROOM is located on the ground floor.

At the heart of the home is a SPACIOUS KITCHEN/DINER, with INTEGRATED OVEN, DISHWASHER and FRIDGE/FREEZER, perfect for both everyday living and entertaining, complemented by a separate UTILITY ROOM for added practicality.

This IMPRESSIVE home has been fitted with a NEW BOILER in October 2025, which comes with a 10 YEAR GUARANTEE. The home also benefits from a NEW WATER TANK.

Potential rental value of £1750pcm. Please contact Michael Tuck Lettings in Abbeymead for more details.

Council Tax band: E

Tenure: Freehold



Hallway

Lounge

20' 11" x 10' 5" (6.38m x 3.18m)

Kitchen/Diner

24' 3" x 8' 11" (7.39m x 2.72m)

Utility Room

7' 2" x 6' 9" (2.18m x 2.06m)

Cloakroom

5' 4" x 2' 11" (1.63m x 0.89m)

Landing 1

Bedroom 1

15' 1" x 10' 6" (4.60m x 3.20m)

Ensuite 1

10' 7" x 5' 6" (3.23m x 1.68m)

Bedroom 4

13' 7" x 8' 10" (4.14m x 2.69m)

Ensuite 2

6' 10" x 3' 11" (2.08m x 1.19m)

Bedroom 5

12' 9" x 6' 11" (3.89m x 2.11m)

Landing 2

Bedroom 2

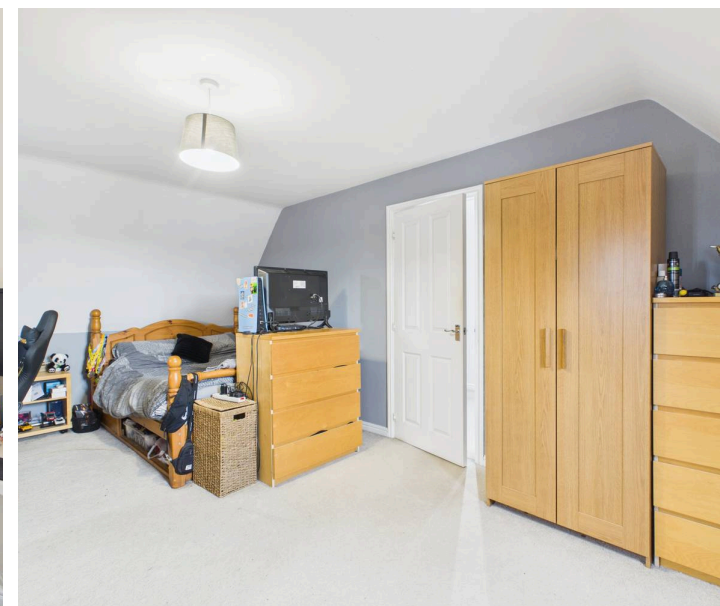
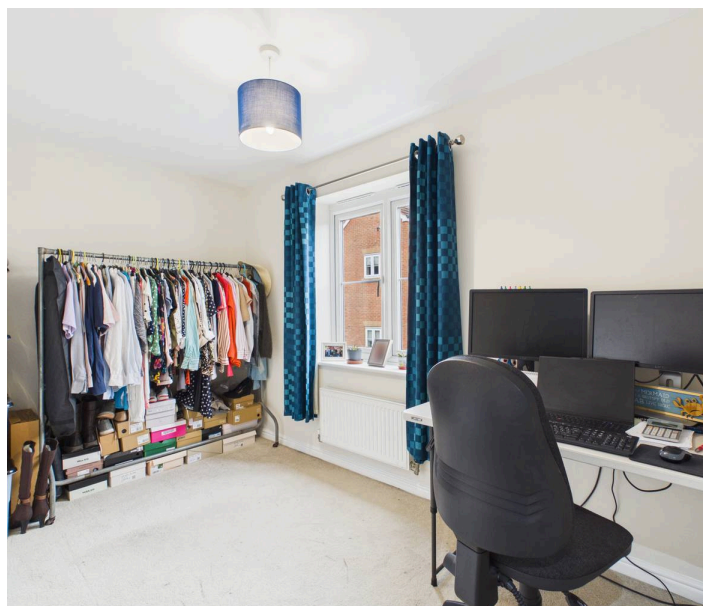
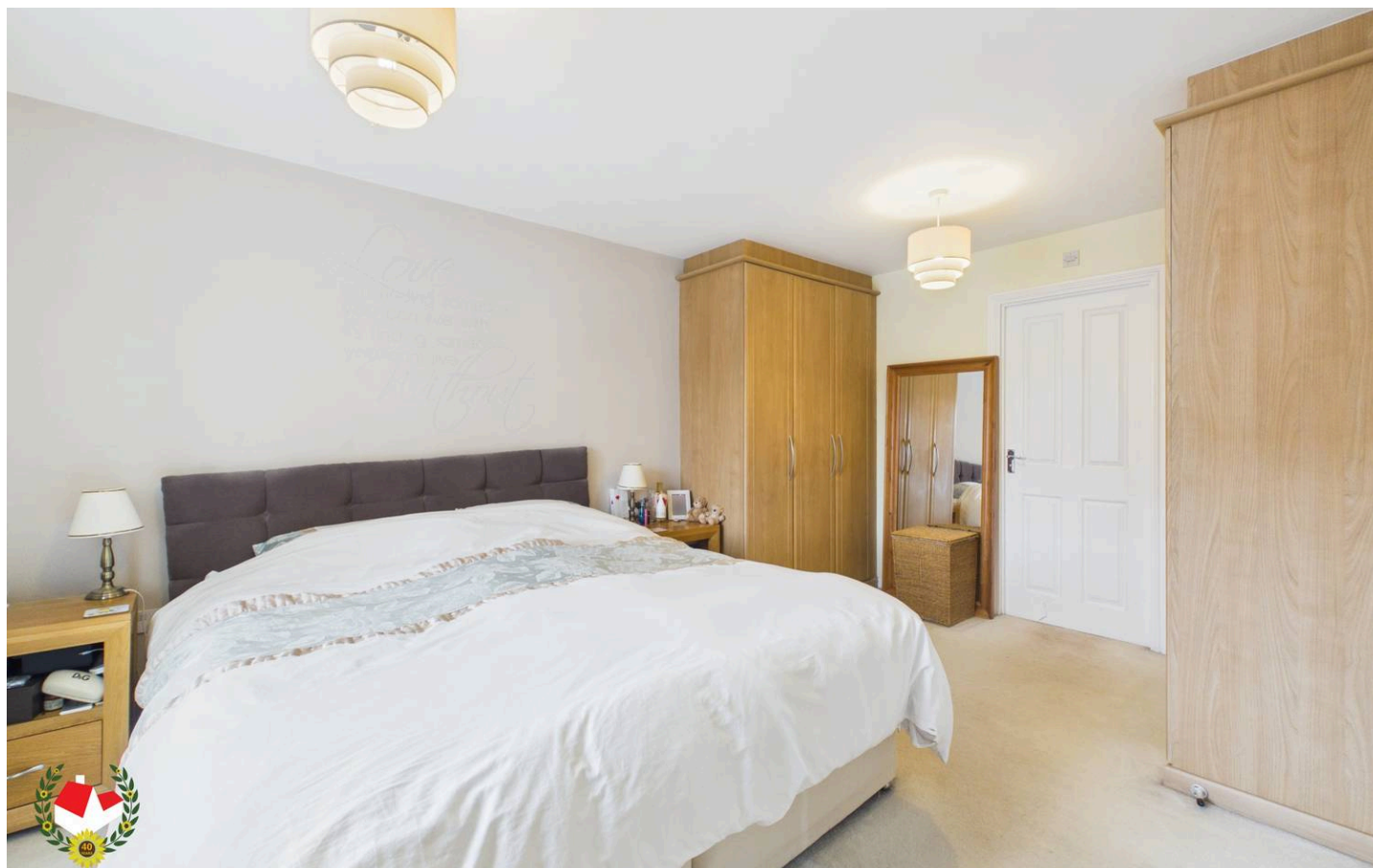
19' 9" x 10' 10" (6.02m x 3.30m)

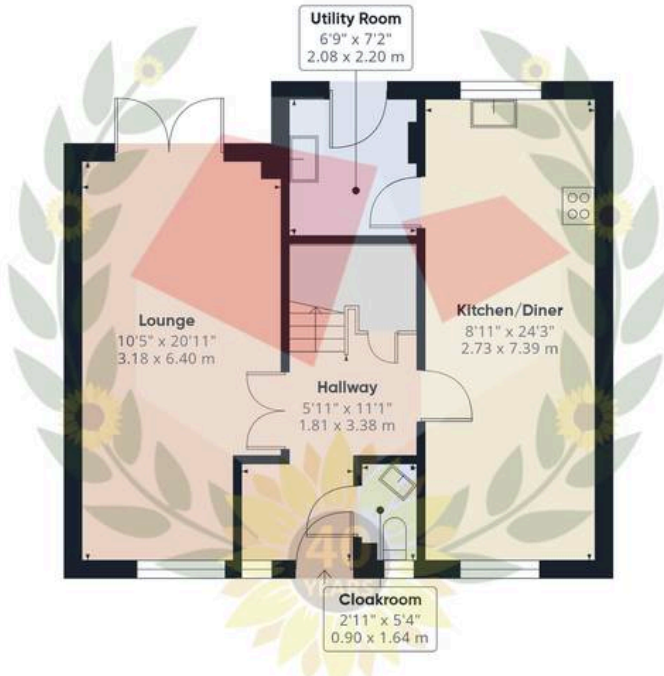
Bedroom 3

19' 7" x 9' 2" (5.97m x 2.79m)

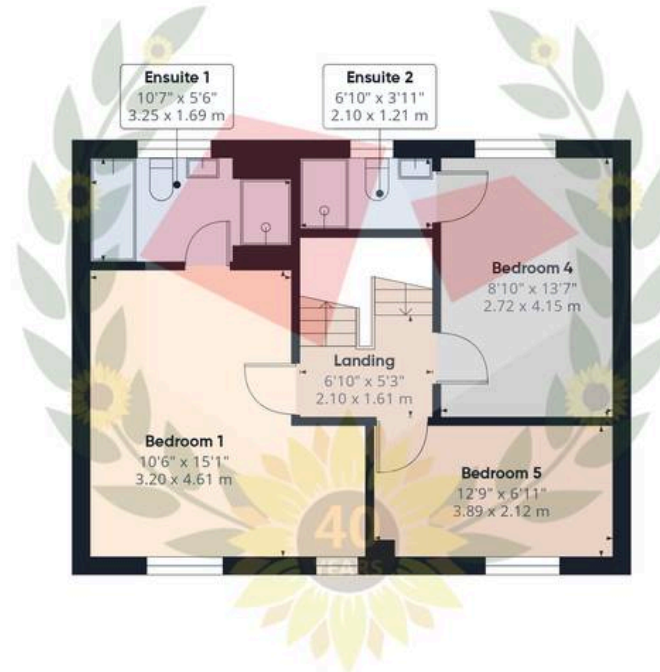
Bathroom

6' 8" x 5' 6" (2.03m x 1.68m)

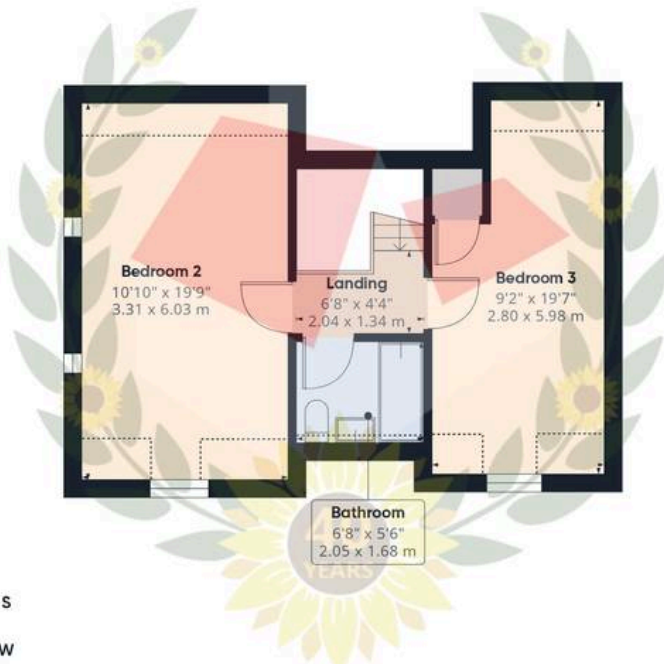




Ground Floor



Floor 1



Floor 2



Approximate total area⁽¹⁾

1566 ft²
145.3 m²

Reduced headroom

58 ft²
5.4 m²

(1) Excluding balconies and terraces

Reduced headroom

----- Below 5 ft/1.5 m

Calculations reference the RICS IPMS 3C standard. Measurements are approximate and not to scale. This floor plan is intended for illustration only.



Michael Tuck Estate & Letting Agents

2 Mead Road, Abbeymead - GL4 5GL

01452 612020 • estates.abbeymead@michaeltuck.co.uk • www.michaeltuck.co.uk/



Important notice: Michael Tuck, its clients and any joints give notice that 1: They are not authorised to make or give any representations or warranties in relation to the property either here or elsewhere, either on their own behalf of their client or otherwise. They assume no responsibility for any statement that may be made in these particulars. These particulars do not form part of any offer or contract and must not be relied upon as statements or representation of fact. 2: Any areas, measurements or distances are approximate. The text, photographs and plans are for guidance only and are not necessarily comprehensive. It should not be assumed that the property has all necessary planning, building regulation or other consents and Michael Tuck have not tested any services, equipment or facilities. Purchasers must satisfy themselves by inspection or otherwise.