



MICHAEL TUCK
ESTATE & LETTING AGENTS



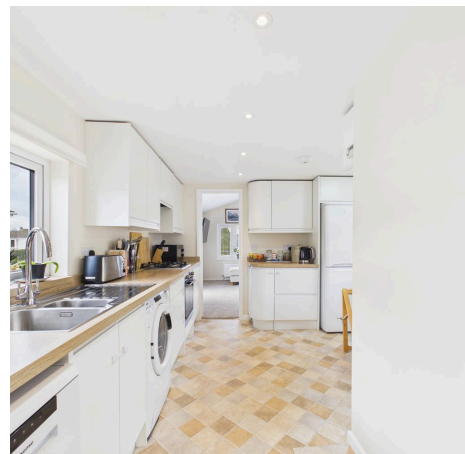
Woodlands Park, Quedgeley GL2 4PT

Gloucester

£140,000

Quedgeley, Gloucester

BEAUTIFULLY PRESENTED TWO BEDROOM PARK HOME BUNGALOW situated within a SOUGHT-AFTER OVER 55's DEVELOPMENT, offering BRIGHT AND SPACIOUS LIVING SPACE that is ideal for those seeking a peaceful and comfortable lifestyle. This delightful property features a GENEROUS LOUNGE, filled with natural light and providing plenty of room for both relaxing and entertaining. The MODERN KITCHEN is well-appointed with ample storage and worktop space, perfect for preparing meals and enjoying casual dining. There are TWO WELL-PROPORTIONED BEDROOMS, including a DOUBLE BEDROOM and a versatile second bedroom that can serve as a guest room, study or hobby space. The CONTEMPORARY SHOWER ROOM is finished to a high standard, offering convenience and style for every-day living. The property is maintained in excellent decorative order throughout, with neutral tones and quality flooring, making it ready to move straight into with minimal effort. Additional benefits include OFF ROAD PARKING for residents and visitors, as well as a USEFUL STORAGE SHED, providing practical solutions for storing garden tools, bicycles or seasonal items. The property sits within a well-managed, friendly park home community designed exclusively for the over 55's, ensuring a secure and tranquil environment with like-minded neighbours. With a LARGE DECKING AREA perfect for outdoor seating and entertaining, you can enjoy the best of both indoor and outdoor living all year round (decking area not included in outside space for the purposes of this listing). The property is ideally suited for buyers seeking low-maintenance accommodation with all the comforts of modern living, while remaining within easy reach of local amenities and transport links. Arrange your viewing today or for more information, call us on 01452 543200. Council Tax band: A



Living Room

12' 9" x 11' 7" (3.88m x 3.54m)

Kitchen/Diner

14' 11" x 11' 7" (4.55m x 3.52m)

Bathroom

5' 6" x 3' 2" (1.68m x 0.96m)

Bedroom 1

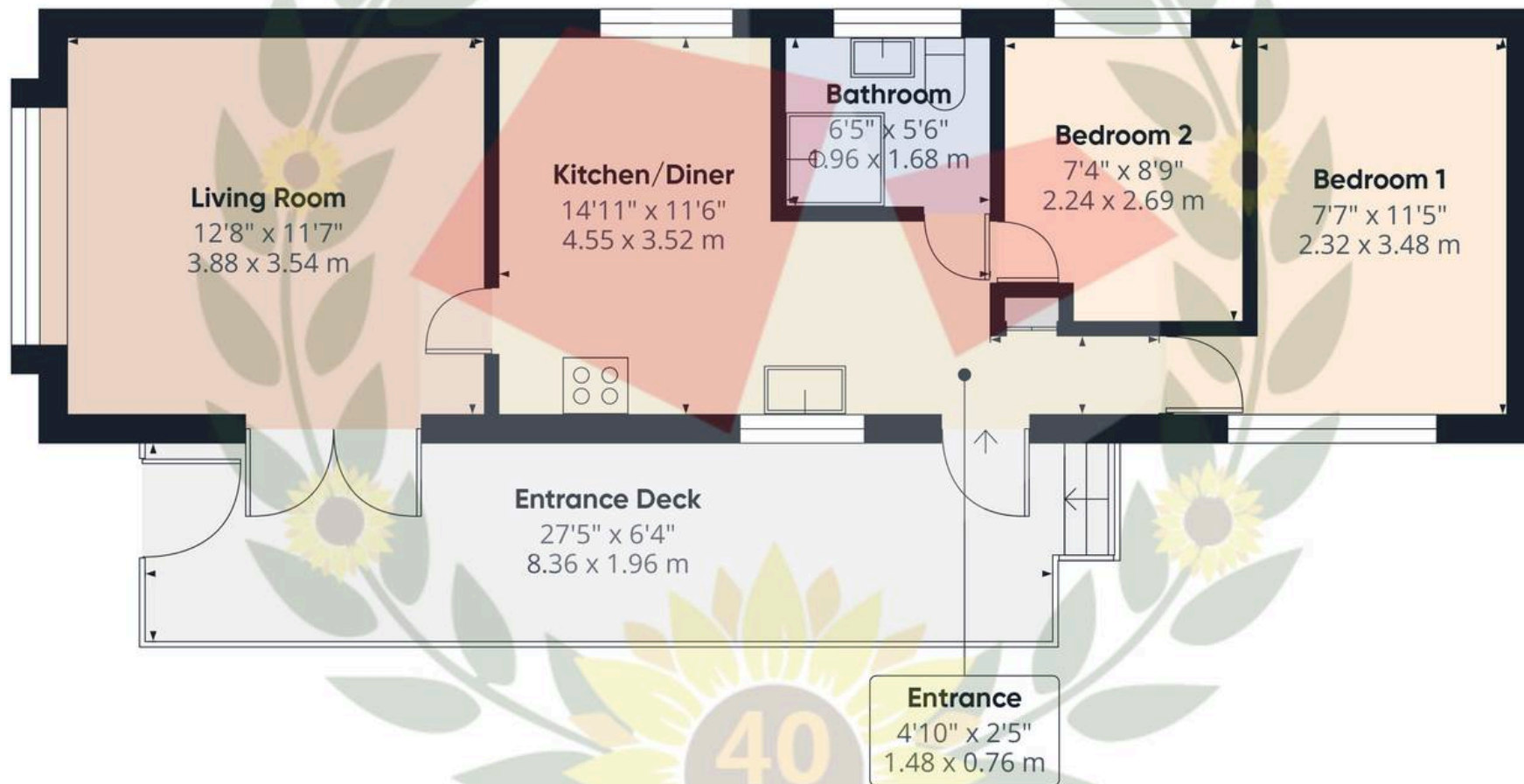
11' 5" x 7' 7" (3.48m x 2.32m)

Bedroom 2

8' 10" x 7' 4" (2.69m x 2.24m)

- Park Home Bungalow
- Beautifully Presented
- Two Bedrooms
- Bright & Spacious Living Space
- Off Road Parking
- Storage Shed
- Over 55's Development
- EPC D Council Tax Band A





Approximate total area⁽¹⁾

487 ft²
 45.3 m²

Balconies and terraces

183 ft²
 17 m²



(1) Excluding balconies and terraces

Calculations reference the RICS IPMS 3C standard. Measurements are approximate and not to scale. This floor plan is intended for illustration only.



Michael Tuck Quedgeley

1 School Lane, Quedgeley - GL2 4PJ

01452 543200 • estates.quedgeley@michaeltuck.co.uk • www.michaeltuck.co.uk/



Important notice: Michael Tuck, its clients and any joints give notice that 1: They are not authorised to make or give any representations or warranties in relation to the property either here or elsewhere, either on their own behalf of their client or otherwise. They assume no responsibility for any statement that may be made in these particulars. These particulars do not form part of any offer or contract and must not be relied upon as statements or representation of fact. 2: Any areas, measurements or distances are approximate. The text, photographs and plans are for guidance only and are not necessarily comprehensive. It should not be assumed that the property has all necessary planning, building regulation or other consents and Michael Tuck have not tested any services, equipment or facilities. Purchasers must satisfy themselves by inspection or otherwise.