 **24 Hethel Close, Quedgeley**

Gloucester

Offers Over **£455,000**

24 Hethel Close

Quedgeley, Gloucester

Immaculate Four Bedroom Home Built In 2024 By Linden Homes To The "Knightley Design" Located in the Hethel Close, Quedgeley!

Downstairs offers THREE reception rooms including; Entrance hall, living room, study, kitchen/diner, wc & utility room!

Upstairs provides; Four LARGE Bedrooms, en-suite & main bathroom.

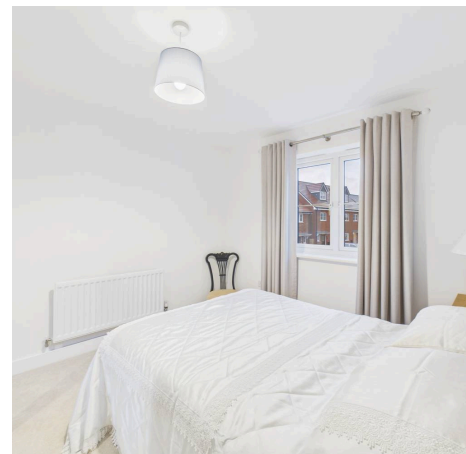
Added incentives are as follows; Upvc double glazing, gas central heating, garage, off road parking for two cars and private & enclosed rear garden.

This accommodation is well located for access to local schools, shops and amenities, and just a short drive from Gloucester city centre and the M5!

Property for sale through Michael Tuck Estate Agents. Potential rental value of £1695pcm, please contact Michael Tuck Lettings in Quedgeley for more details.

Call us today to arrange your viewing on 01452 543200.

- Three Reception Rooms
- Utility Room
- Off Road Parking For Two Cars
- Immaculate Throughout
- Single Garage With Power & Lighting
- En-Suite To Bedroom One
- Kitchen/Diner
- NHBC Remaining
- Four Large Bedrooms
- Energy Rating A



Hallway

17' 0" x 6' 9" (5.19m x 2.05m)

Study

12' 9" x 10' 6" (3.88m x 3.20m)

Living Room

17' 5" x 10' 6" (5.31m x 3.21m)

Kitchen/Diner

17' 0" x 10' 4" (5.19m x 3.15m)

Wc

4' 11" x 3' 8" (1.49m x 1.11m)

Utility Room

8' 4" x 5' 7" (2.55m x 1.69m)

Landing

17' 11" x 6' 8" (5.46m x 2.02m)

Bedroom One

10' 10" x 9' 8" (3.30m x 2.94m)

En-suite

7' 7" x 5' 3" (2.30m x 1.60m)

Bedroom Two

10' 7" x 9' 10" (3.22m x 3.00m)

Bedroom Three

10' 6" x 9' 11" (3.20m x 3.01m)

Bedroom Four

11' 5" x 7' 1" (3.47m x 2.15m)

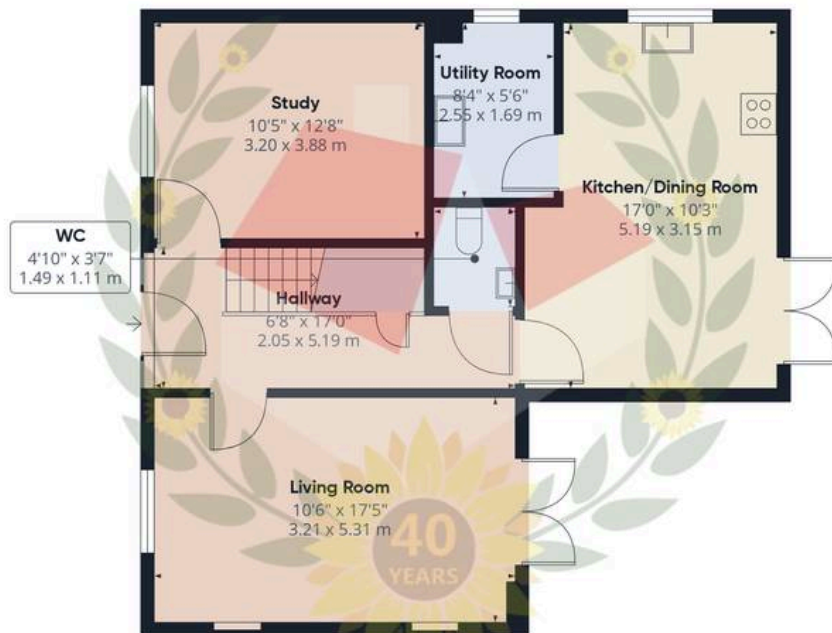
Bathroom

6' 10" x 6' 3" (2.09m x 1.90m)

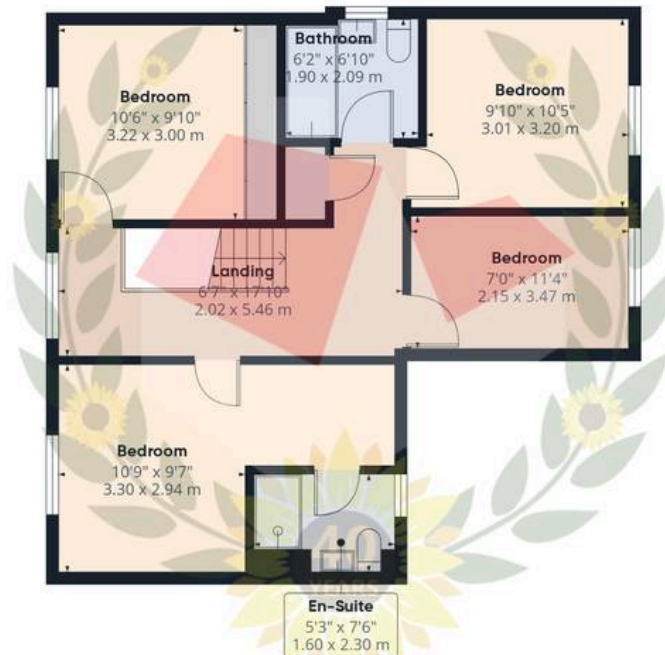
Additional Information

Electric - Mains; Gas - Mains; Water - Mains; Sewerage - Mains





Ground Floor Building 1



Floor 1 Building 1



Ground Floor Building 2

Approximate total area⁽¹⁾

1522 ft²

141.5 m²

(1) Excluding balconies and terraces

Calculations reference the RICS IPMS 3C standard. Measurements are approximate and not to scale. This floor plan is intended for illustration only.

GIRAFFE360



Michael Tuck Quedgeley

1 School Lane, Quedgeley - GL2 4PJ

01452 543200 • estates.quedgeley@michaeltuck.co.uk • www.michaeltuck.co.uk/



Important notice: Michael Tuck, its clients and any joints give notice that 1: They are not authorised to make or give any representations or warranties in relation to the property either here or elsewhere, either on their own behalf of their client or otherwise. They assume no responsibility for any statement that may be made in these particulars. These particulars do not form part of any offer or contract and must not be relied upon as statements or representation of fact. 2: Any areas, measurements or distances are approximate. The text, photographs and plans are for guidance only and are not necessarily comprehensive. It should not be assumed that the property has all necessary planning, building regulation or other consents and Michael Tuck have not tested any services, equipment or facilities. Purchasers must satisfy themselves by inspection or otherwise.