



**MICHAEL TUCK**  
ESTATE & LETTING AGENTS



**5 Church Road, Churchdown – GL3 2HT**

Gloucester

Guide Price **£155,000**



## 5 Church Road

Churchdown, Gloucester

Situated within a private OVER-55s development in the highly desirable village of Churchdown, this well-presented TWO-BEDROOM MID-TERRACE property offers comfortable and low-maintenance living in a friendly community setting.

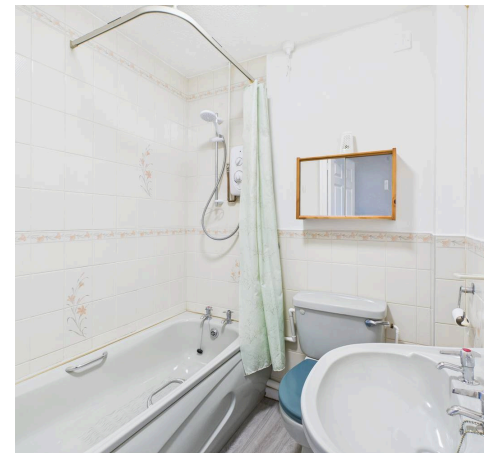
The property has been freshly updated with new NEW FLOORING throughout and is presented to a very good standard. Ground floor accommodation includes an inviting hallway, downstairs CLOAKROOM, good-sized living room and a MODERN kitchen. The first floor comprises of a spacious bathroom, two bedrooms, one being a GENEROUS double and the second suitable as a guest room, study, or hobby space.

Residents benefit from attractive COMMUNAL GARDENS, providing pleasant outdoor space without the upkeep, as well as communal OFF-ROAD PARKING and an on site launderette and communal activities room. The development is conveniently located close to excellent local amenities, including shops, easy transport links to both Gloucester and Cheltenham, and village facilities, making everyday living both easy and enjoyable.

An excellent opportunity for those aged 55 and over seeking a quiet, well-maintained home in a popular village location.

Council Tax band: C

Tenure: Leasehold





### Hallway

### Lounge

13' 6" x 11' 8" (4.12m x 3.56m)

### Kitchen

8' 10" x 5' 9" (2.69m x 1.75m)

### Cloakroom

5' 7" x 2' 9" (1.70m x 0.84m)

### Landing

### Bedroom 1

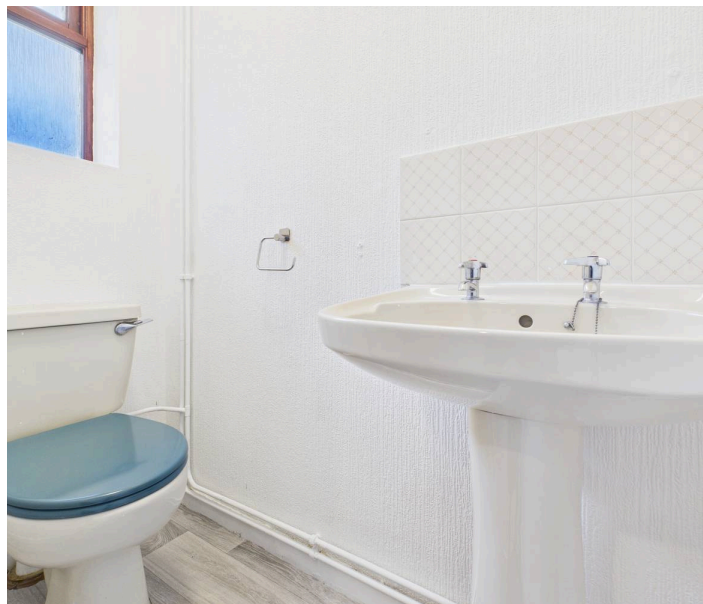
11' 8" x 8' 7" (3.56m x 2.62m)

### Bedroom 2

8' 5" x 7' 9" (2.57m x 2.36m)

### Bathroom

5' 10" x 5' 5" (1.78m x 1.65m)



**Cloakroom**  
5'7" x 2'9"  
1.71 x 0.84 m



Ground Floor

Approximate total area<sup>(1)</sup>

537 ft<sup>2</sup>

49.9 m<sup>2</sup>



**Bathroom**  
5'5" x 5'10"  
1.66 x 1.78 m

Floor 1



(1) Excluding balconies and terraces

Calculations reference the RICS IPMS 3C standard. Measurements are approximate and not to scale. This floor plan is intended for illustration only.

GIRAFFE360





## Michael Tuck Estate & Letting Agents

2 Mead Road, Abbeymead - GL4 5GL

01452 612020 • [estates.abbeymead@michaeltuck.co.uk](mailto:estates.abbeymead@michaeltuck.co.uk) • [www.michaeltuck.co.uk/](http://www.michaeltuck.co.uk/)



**Important notice:** Michael Tuck, its clients and any joints give notice that 1: They are not authorised to make or give any representations or warranties in relation to the property either here or elsewhere, either on their own behalf of their client or otherwise. They assume no responsibility for any statement that may be made in these particulars. These particulars do not form part of any offer or contract and must not be relied upon as statements or representation of fact. 2: Any areas, measurements or distances are approximate. The text, photographs and plans are for guidance only and are not necessarily comprehensive. It should not be assumed that the property has all necessary planning, building regulation or other consents and Michael Tuck have not tested any services, equipment or facilities. Purchasers must satisfy themselves by inspection or otherwise.