



MICHAEL TUCK
ESTATE & LETTING AGENTS



21 Cotteswold Road, Gloucester – GL4 6RG

Gloucester

Guide Price £325,000

21 Cotteswold Road

Gloucester, Gloucester

This beautifully maintained two double bedroom detached house is the perfect move-in ready home and is offered to the market chain free. Immaculate throughout, it combines style, comfort and convenience in equal measure.

Inside, you'll find a light and airy living space, a modern fitted kitchen, two generously sized double bedrooms and a stylish bathroom all finished to a high standard.

The real highlight is the large rear garden – an ideal spot for summer barbecues, family gatherings, or simply relaxing in the sunshine. Off-road parking to the front completes the picture, ensuring practicality matches the charm.

With its immaculate presentation, spacious garden and chain-free status, this property is a rare find – ready and waiting for you to make it your own.

Property for sale through Michael Tuck Estate Agents. Approximate rental value of £1,150pcm, please contact Michael Tuck Lettings in Abbeymead for more details.

We highly advise a viewing, to Arrange yours call us today on 01452 612020.

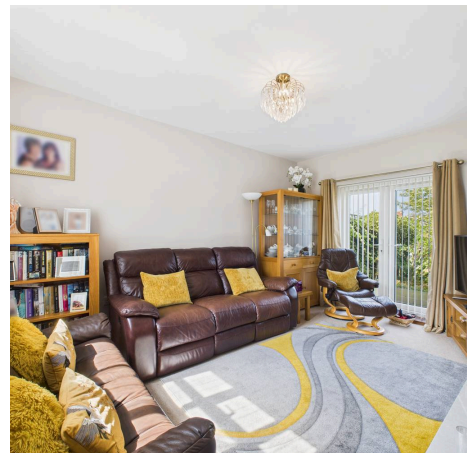
Council Tax band: C

Tenure: Freehold

EPC Energy Efficiency Rating: B

EPC Environmental Impact Rating: B

- NO ONWARD CHAIN
- TWO DOUBLE BEDROOMS
- DETACHED



Hallway

Lounge

10' 3" x 14' 11" (3.12m x 4.55m)

Kitchen

10' 0" x 14' 2" (3.05m x 4.32m)

Utility Room

10' 4" x 6' 4" (3.15m x 1.93m)

Landing

Bedroom 1

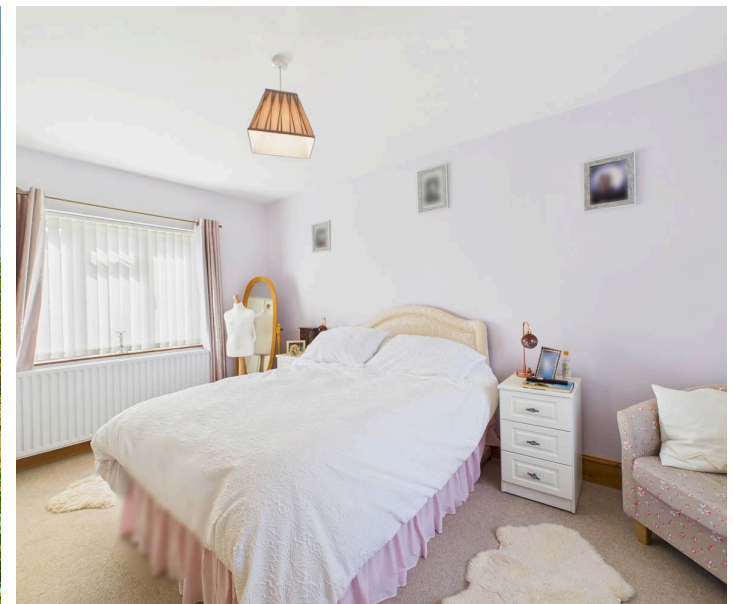
10' 4" x 14' 11" (3.15m x 4.55m)

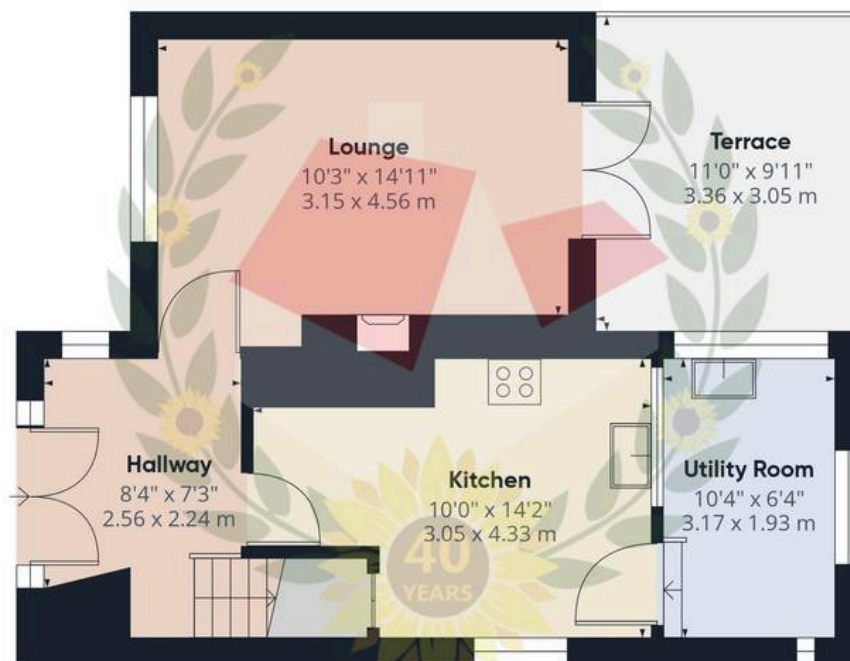
Bedroom 2

10' 0" x 13' 6" (3.05m x 4.11m)

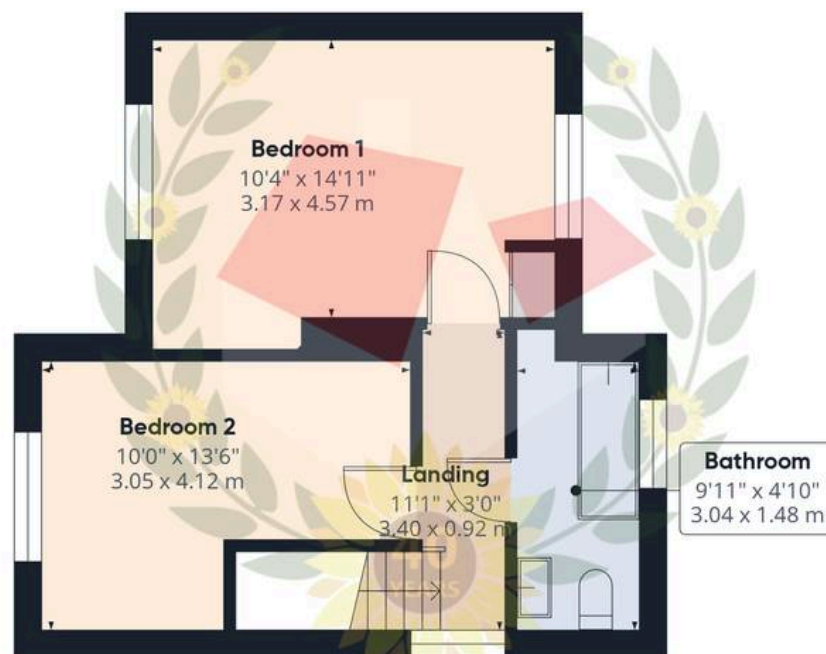
Bathroom

9' 11" x 4' 10" (3.02m x 1.47m)





Ground Floor



Floor 1

Approximate total area⁽¹⁾

796 ft²

74 m²

Balconies and terraces

110 ft²

10.2 m²

(1) Excluding balconies and terraces

Calculations reference the RICS IPMS 3C standard. Measurements are approximate and not to scale. This floor plan is intended for illustration only.

GIRAFFE360



Michael Tuck Estate & Letting Agents

2 Mead Road, Abbeymead - GL4 5GL

01452 612020 • estates.abbeymead@michaeltuck.co.uk • www.michaeltuck.co.uk/



Important notice: Michael Tuck, its clients and any joints give notice that 1: They are not authorised to make or give any representations or warranties in relation to the property either here or elsewhere, either on their own behalf of their client or otherwise. They assume no responsibility for any statement that may be made in these particulars. These particulars do not form part of any offer or contract and must not be relied upon as statements or representation of fact. 2: Any areas, measurements or distances are approximate. The text, photographs and plans are for guidance only and are not necessarily comprehensive. It should not be assumed that the property has all necessary planning, building regulation or other consents and Michael Tuck have not tested any services, equipment or facilities. Purchasers must satisfy themselves by inspection or otherwise.