



**MICHAEL TUCK**  
ESTATE & LETTING AGENTS



 **1 Drivemoor, Abbeydale – GL4 5XP**

Gloucester

Guide Price **£395,000**

# 1 Drivemoor

## Abbeydale, Gloucester

Located in a popular and well-established area, this three-bedroom detached bungalow presents an exciting opportunity for those looking to put their own stamp on a property. Offering a spacious layout throughout, the home includes a generously sized living area, three bedrooms, kitchen, bathroom and a cloakroom.

Externally, the property benefits from off-road parking and a garage, making it ideal for families or downsizers alike. With bungalows in this area rarely coming to market, this is a fantastic chance to create your perfect home in a highly desirable location.

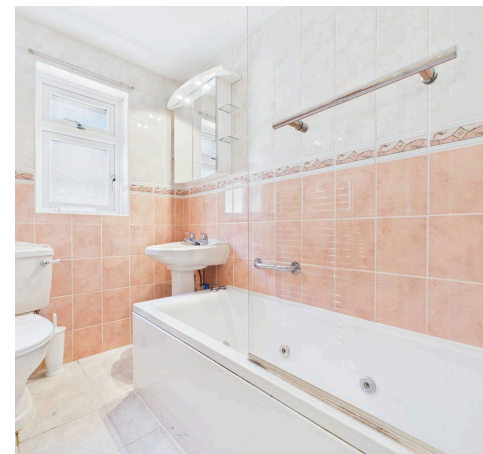
Property for sale through Michael Tuck Estate Agents. Potential Rental Value of £1,395pcm, please contact Michael Tuck Lettings in Abbeymead for more details.

We highly advise a viewing, to Arrange yours call us today on 01452 612020

Council Tax band: D

Tenure: Freehold

- NO ONWARD CHAIN
- DETACHED
- THREE BEDROOMS
- GARAGE AND OFF ROAD PARKING
- PRIVATE ENCLOSED REAR GARDEN
- POPULAR LOCATION
- DOUBLE GLAZING AND GAS CENTRAL HEATING
- EPC TBC COUNCIL TAX D



### Hallway

### Lounge

17' 10" x 11' 1" (5.44m x 3.38m)

### Kitchen

11' 8" x 9' 0" (3.56m x 2.74m)

### Bedroom 1

10' 3" x 12' 5" (3.12m x 3.78m)

### Bedroom 2

13' 7" x 7' 8" (4.14m x 2.34m)

### Bedroom 3

8' 11" x 9' 0" (2.72m x 2.74m)

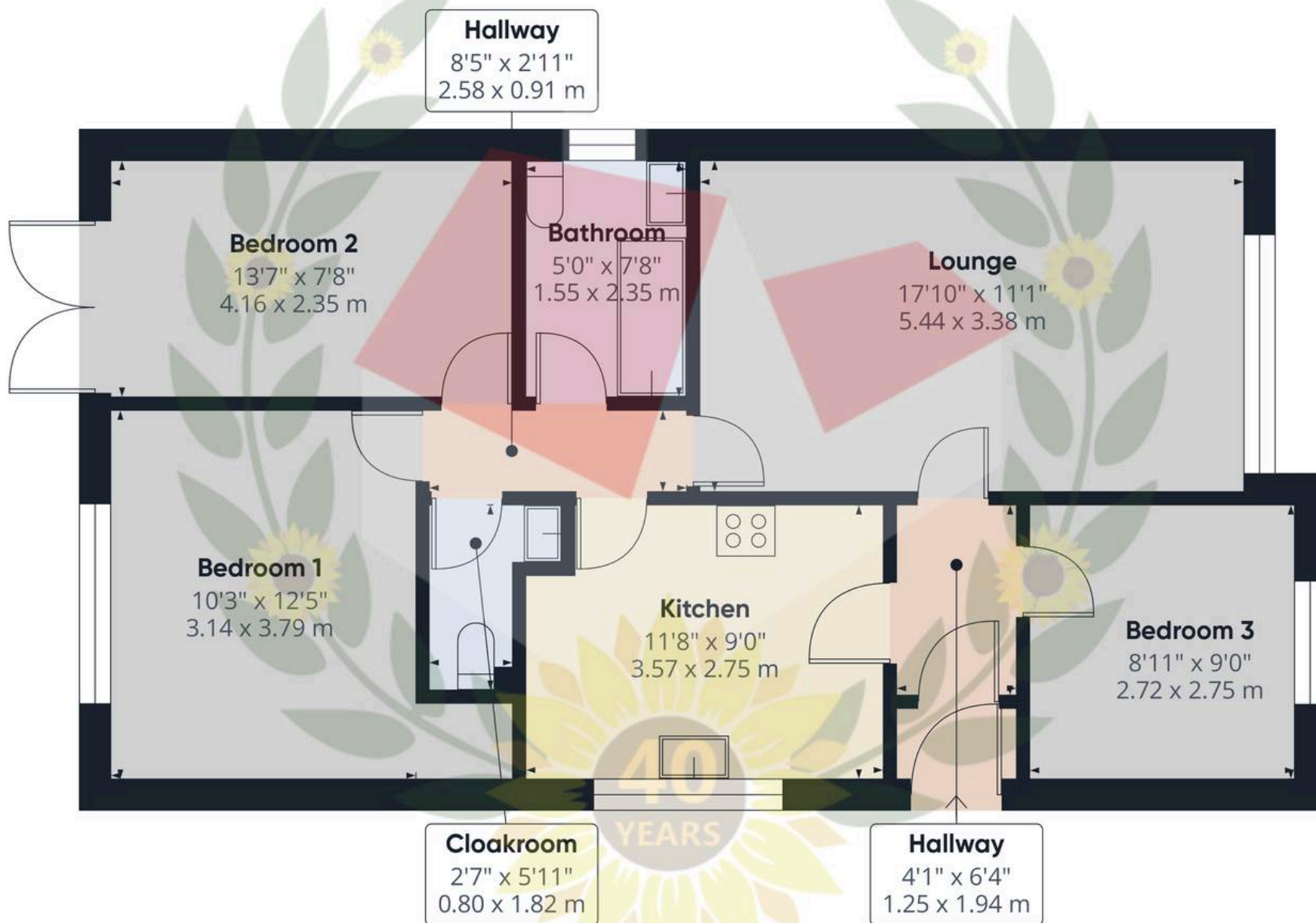
### Bathroom

5' 0" x 7' 8" (1.52m x 2.34m)

### Cloakroom

2' 7" x 5' 11" (0.79m x 1.80m)





Approximate total area<sup>(1)</sup>

751 ft<sup>2</sup>

69.7 m<sup>2</sup>

(1) Excluding balconies and terraces

Calculations reference the RICS IPMS 3C standard. Measurements are approximate and not to scale. This floor plan is intended for illustration only.

GIRAFFE360



**MICHAEL TUCK**  
ESTATE & LETTING AGENTS



## Michael Tuck Estate & Letting Agents

2 Mead Road, Abbeymead - GL4 5GL

01452 612020 • [estates.abbeymead@michaeltuck.co.uk](mailto:estates.abbeymead@michaeltuck.co.uk) • [www.michaeltuck.co.uk/](http://www.michaeltuck.co.uk/)



**Important notice:** Michael Tuck, its clients and any joints give notice that 1: They are not authorised to make or give any representations or warranties in relation to the property either here or elsewhere, either on their own behalf of their client or otherwise. They assume no responsibility for any statement that may be made in these particulars. These particulars do not form part of any offer or contract and must not be relied upon as statements or representation of fact. 2: Any areas, measurements or distances are approximate. The text, photographs and plans are for guidance only and are not necessarily comprehensive. It should not be assumed that the property has all necessary planning, building regulation or other consents and Michael Tuck have not tested any services, equipment or facilities. Purchasers must satisfy themselves by inspection or otherwise.