



The Docks, Gloucester

Leasehold

£160,000

**Flat 23, Biddle & Shipton, The Docks,
Gloucester, Gloucestershire, GL1 2BY**

£160,000

Leasehold. Council Tax Band B



1 Bedrooms



1 Bathrooms



1 Receptions

Features

- *Fourth Floor Apartment
- * Double Bedroom
- *Open Plan Kitchen/Living Space
- *Bathroom
- *Allocated Undercover Parking Space
- * Upgraded Electric Heaters
- *Lift Access
- * Energy Rating B82
- *Exposed Character Beams and Brickwork
- *

Michael Tuck Estate and Letting Agents

1 School Lane Quedgeley Gloucester Gloucestershire GL2 4PJ

01452 543200

estates.quedgeley@michaeltuck.co.uk

www.michaeltuck.co.uk

The Property

We are delighted to bring to the market a FOURTH Floor Apartment located in the Biddle & Shipton Warehouse at Gloucester's Historic Docks with Views across Mariners Square and the inlet Canal.

Accommodation comprises of Entrance Hall, Utility Cupboard, Bathroom, DOUBLE Bedroom and a Generous OPEN PLAN Living Area & Kitchen.

Further benefits include a Lift Access, upgraded heating system and an ALLOCATED Undercover Parking Space in the Barge Arm.

In our opinion internally the property is well maintained and well presented with character features including exposed beams and brickwork.

Property for sale through Michael Tuck Estate Agents.

Approximate potential rental value of £850pcm , please contact Michael Tuck Lettings in Gloucester for more details.

Call 01452 543200 To View

Entrance Hall 11' 3" x 5' 8" (3.43m x 1.73m)

Open Plan Kitchen/Living Area 15' 11" x 19' 7" (4.85m x 5.96m)

Utility room 5' 11" x 5' 3" (1.80m x 1.60m)

Double Bedroom 10' 7" x 10' 8" (3.22m x 3.25m)

Bathroom 7' 5" x 5' 8" (2.26m x 1.73m)

Allocated Parking

Secure under cover allocated space in the Barge Arm East

Tenure - Lease

Expiry Date of Lease: 11/12/2191 - 200 years (less 20 days) from 01/01/1992

Management Company: Ash & Co

Service Charge: £2889.16 per annum includes Shared building maintenance, management and insurances, just over 40% covers Docks service charge including CCTV, security, cleaning & maintenance

Additional Information

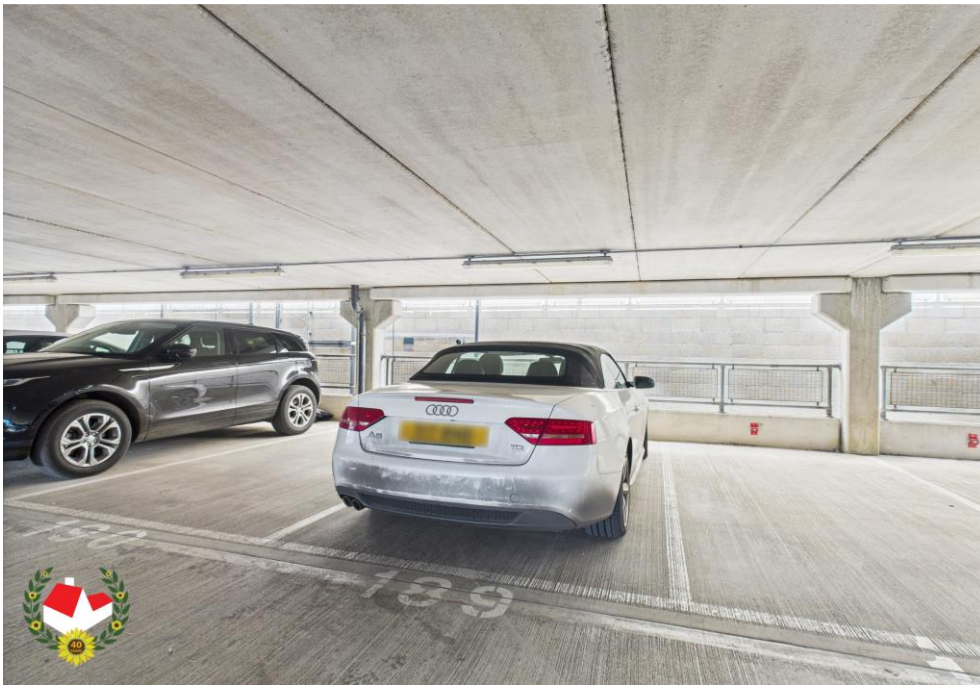
Gas - N/A

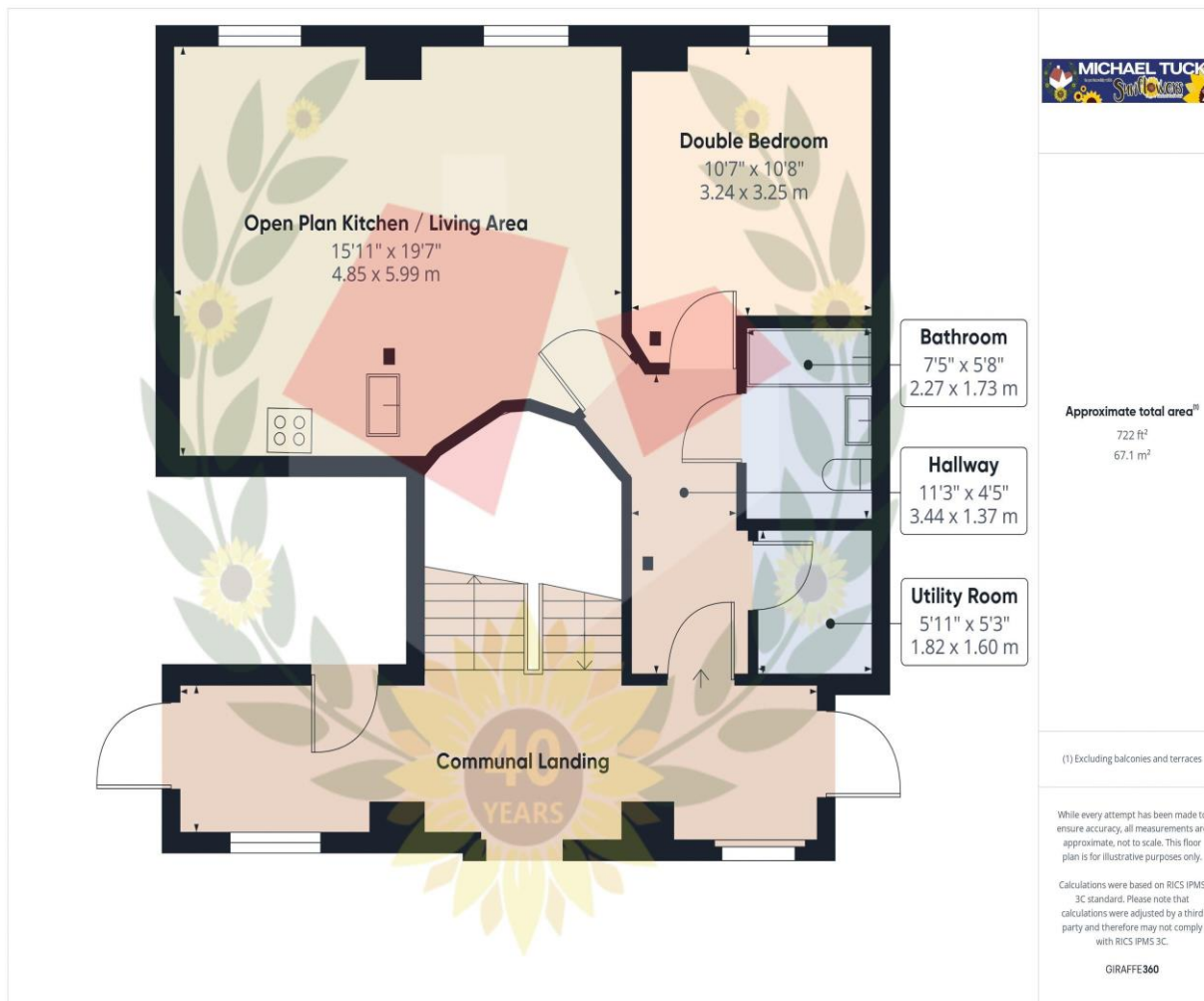
Electric - Mains

Water & Sewerage - Mains









FOR ILLUSTRATIVE PURPOSES ONLY – NOT TO SCALE

The position and size of doors, windows, appliances, and other features are approximate only.
Unauthorised reproduction prohibited

Important notice: Michael Tuck, its clients and any joints give notice that 1: They are not authorised to make or give any representations or warranties in relation to the property either here or elsewhere, either on their own behalf of their client or otherwise. They assume no responsibility for any statement that may be made in these particulars. These particulars do not form part of any offer or contract and must not be relied upon as statements or representation of fact. 2: Any areas, measurements or distances are approximate. The text, photographs and plans are for guidance only and are not necessarily comprehensive. It should not be assumed that the property has all necessary planning, building regulation or other consents and Michael Tuck have not tested any services, equipment or facilities. Purchasers must satisfy themselves by inspection or otherwise.

