



MICHAEL TUCK
ESTATE & LETTING AGENTS

Brookside Cottage Mill Lane, Witcombe

Gloucester

£485,000

Brookside Cottage Mill Lane

Witcombe, Gloucester

Nestled down a tranquil country lane in the highly sought-after village of Witcombe, this spacious five-bedroom detached bungalow offers the perfect blend of rural tranquility and convenient access to local amenities.

Enjoy breathtaking views of the surrounding countryside, all while being just a short distance from local shops, schools, and more.

This lovely home benefits from UPVC double glazing, gas central heating, and solar panels, ensuring energy efficiency and lower running costs. A well-maintained, enclosed rear garden offering the perfect space for relaxation or outdoor activities. The property includes a double garage with power and off-road parking for multiple vehicles.

Approximate rental value of £1,750pcm - £2,000pcm. Please contact Michael Tuck Lettings in Abbeymead for further information.

- Four Piece Suite Family Bathroom
- Enclosed Rear Garden
- Five Bedrooms
- Modern Fitted Kitchen
- Energy Rating C
- Sought After Location
- Double Garage & Off Road Parking
- Rural Views



Entrance Hall

Lounge/Diner

Dimensions: 22' 8" x 12' 1" (6.90m x 3.68m).

Kitchen

Dimensions: 9' 10" x 9' 10" (2.99m x 2.99m).

Conservatory

Dimensions: 13' 0" x 7' 9" (3.96m x 2.36m).

Bathroom

Dimensions: 9' 10" x 7' 7" (2.99m x 2.31m).

Bedroom 1

Dimensions: 12' 7" x 10' 6" (3.83m x 3.20m).

Bedroom 2

Dimensions: 12' 7" x 10' 1" (3.83m x 3.07m).

Bedroom 3

Dimensions: 12' 0" x 9' 10" (3.65m x 2.99m).

Bedroom 4

Dimensions: 12' 6" x 9' 1" (3.81m x 2.77m).

Bedroom 5

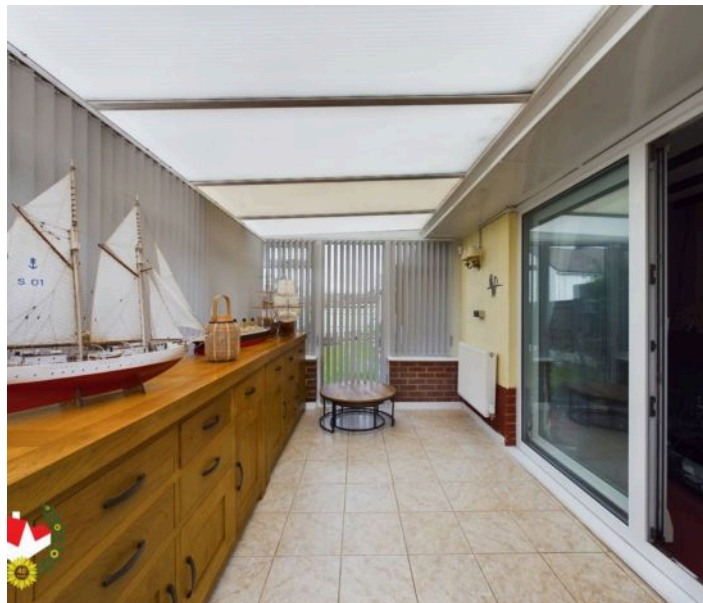
Dimensions: 9' 2" x 9' 1" (2.79m x 2.77m).

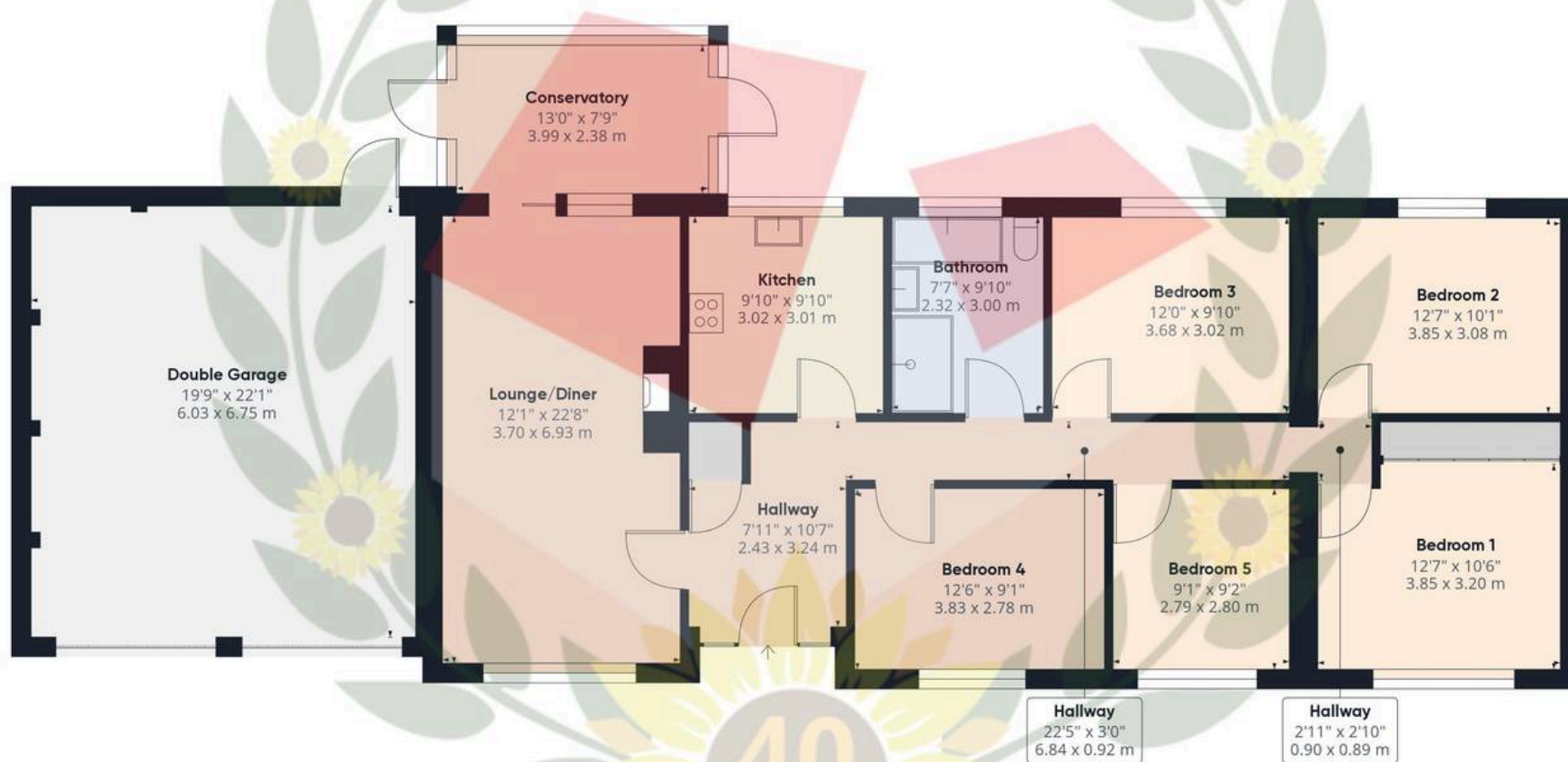
Double Garage

Dimensions: 22' 1" x 19' 9" (6.73m x 6.02m).

Additional Information From Vendor

Utilities • Electricity – Mains • Gas – Mains • Water – Mains •
Sewerage – Mains • Broadband – Copper Wire





Approximate total area⁽¹⁾

1783.69 ft²

165.71 m²

(1) Excluding balconies and terraces

While every attempt has been made to ensure accuracy, all measurements are approximate, not to scale. This floor plan is for illustrative purposes only.

GIRAFFE 360



Michael Tuck Estate & Letting Agents

2 Mead Road, Abbeymead - GL4 5GL

01452 612020 • estates.abbeymead@michaeltuck.co.uk • www.michaeltuck.co.uk/



Important notice: Michael Tuck, its clients and any joints give notice that 1: They are not authorised to make or give any representations or warranties in relation to the property either here or elsewhere, either on their own behalf of their client or otherwise. They assume no responsibility for any statement that may be made in these particulars. These particulars do not form part of any offer or contract and must not be relied upon as statements or representation of fact. 2: Any areas, measurements or distances are approximate. The text, photographs and plans are for guidance only and are not necessarily comprehensive. It should not be assumed that the property has all necessary planning, building regulation or other consents and Michael Tuck have not tested any services, equipment or facilities. Purchasers must satisfy themselves by inspection or otherwise.